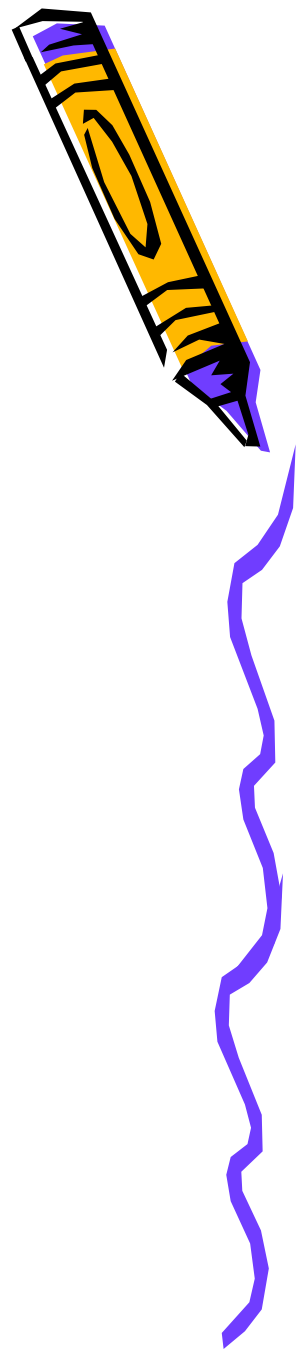


102.4(a)5 E&S Plan must include Maps



- Drainage patterns
- Field and property boundaries
- Buildings and farm structures
- AHUA
- Roads and crossroads
- BMPs
- Soils maps

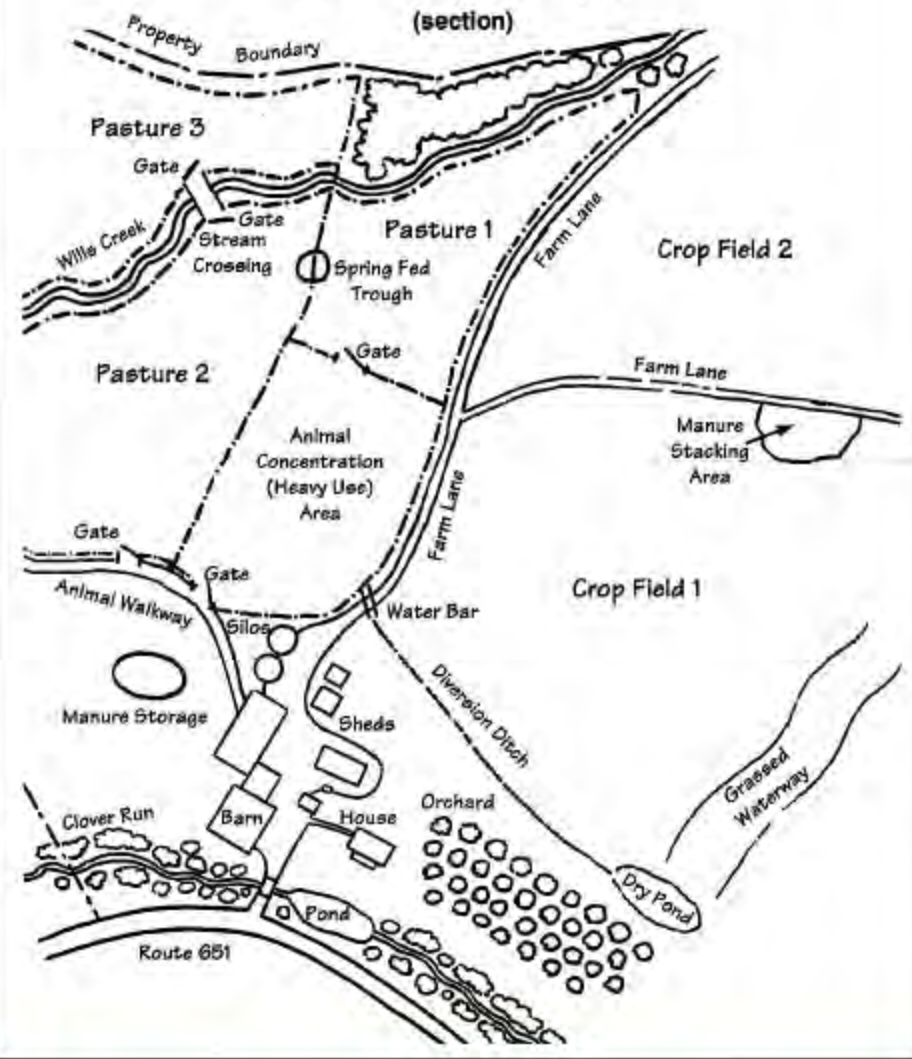


Pennsylvania Water Quality Action Packet for Agriculture

Attachment #3

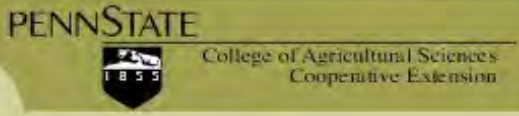
Farm Map Example

(section)



SoilMap

Phil Says: Early Spring!
Mapping Pennsylvania Soils and More



Art depiction of land protected with conservation buffers and other practices. Artist is Scott Patton. USDA Natural Resources Conservation Service.

Welcome to SoilMap Version 2

SoilMap provides free and convenient online access to detailed soils information for all of Pennsylvania, as well as a wide variety of other environmental data layers. A suite of simple tools allows users to interact with the online mapping and retrieve a wealth of information about Pennsylvania's natural resources. Click **Start Mapping** to make maps.

SoilMap is presented by the Penn State Cooperative Extension Geospatial Technology Program. The system is hosted at Penn State. Soil attribute reports are served from the NRCS Soil Data Mart. Send comments, questions or requests for new features using the [Comment Form](#).

SoilMap Features

- **Soils:** Seamless, statewide 2006 SSURGO soils data. Direct access to detailed soil reports from NRCS Soil Data Mart.
- **GPS Integration:** Get GPS coordinates for any location or enter GPS coordinates and zoom to that location.
- **Environmental Data:** Floodplains, Raster Data: statewide doq data, 24k, 100k and 250k topo maps, and statewide 10m NED data.
- **Over 1,400,000 Maps Served !!**
- **Click here to Start Mapping !**

What's New on SoilMap

- New ! - New NRCS Soil Reports (in Soil Report Tool). Forestland Erosion Potential, Septic System Suitability:In Ground, Septic System Suitability:Sand Mound**
- New ! - Streams and 305B Streams now have stream name labels available.**
- Tip ! - To see detailed soil information,**

- Start Mapping
- SoilMap Home
- Send Comments
- About SoilMap
- What's New
- FAQ



SoilMap
Mapping Pennsylvania Soils and More!

Map Scale 1: 10,804

Map Layers Legend

- Soils
- Roads
 - Interstate
 - US Route
 - State Route
 - Local Roads
 - Access Ramps
 - Other
- Water
- Counties
- Boroughs

The information on SoilMap is provided as is and the User assumes the entire risk as to its quality and performance. Soil maps are subject to change and may be copied without permission. Enlarging the maps may result in misunderstanding of map details. Help in using soil surveys is available from the local office of the NRCS.

Pa SoilMap - Windows Internet Explorer provided by DEP

http://soilmap.psu.edu/code/placelocateindex.asp

SoilMap
Mapping Pennsylvania Soils and More!

Locate a Place

York Zoom to this County

York Haven Borough Zoom to this Municipality

Locate a Pennsylvania Quadrangle...

Name Zoom to this Quad

Go to a GPS Coordinate

Enter a Coordinate in Decimal Degrees (NAD83). Your GPS unit may label Latitude as North and Longitude as West

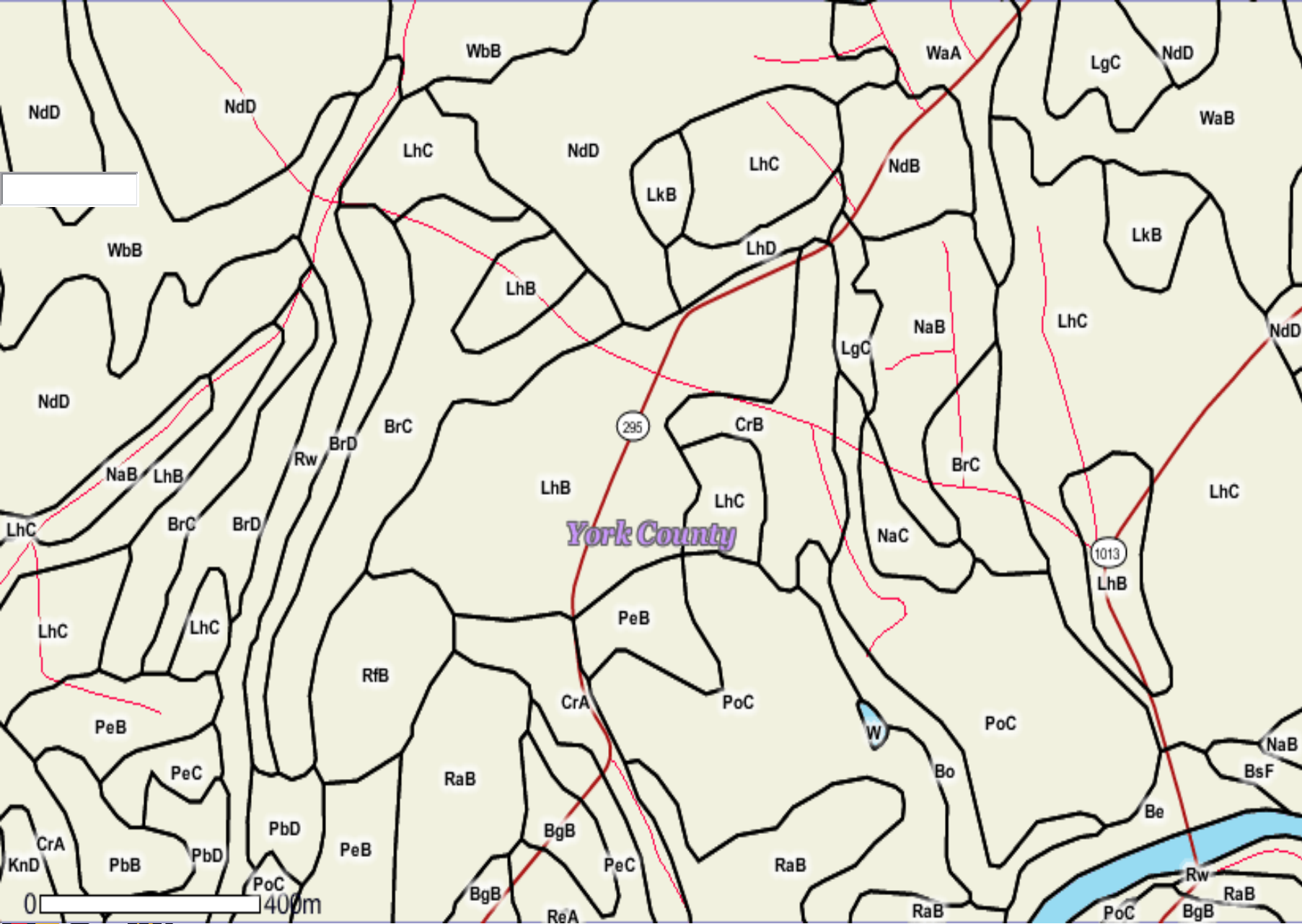
Latitude: Longitude: Make Map

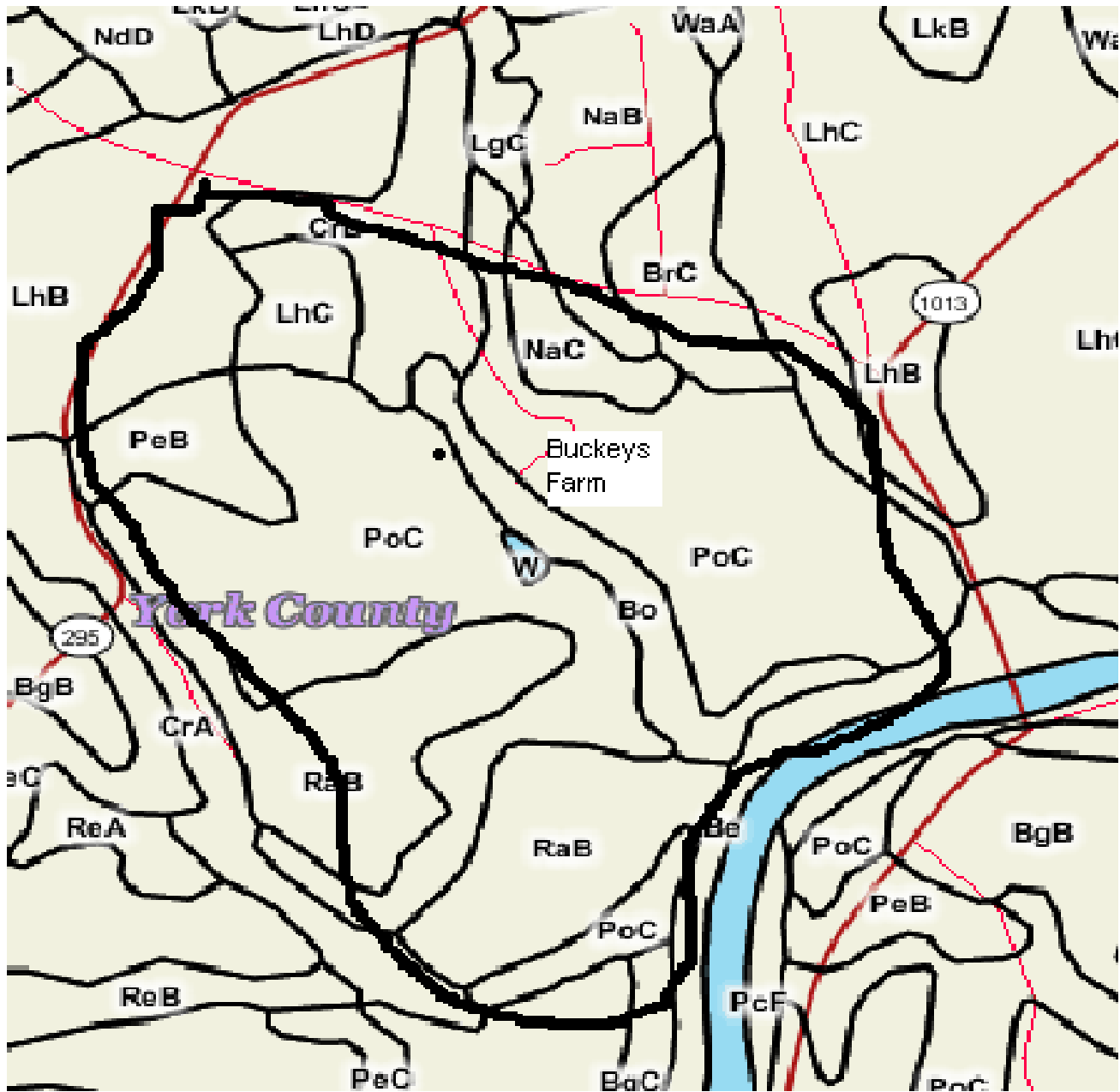
Enter a Coordinate in Degrees, Minutes, Seconds (NAD83). If Coordinate is in Decimal Minutes, enter Degrees and Minutes and leave Sec boxes blank.

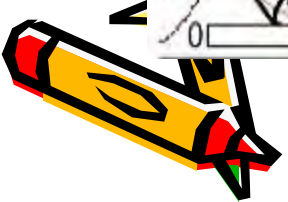
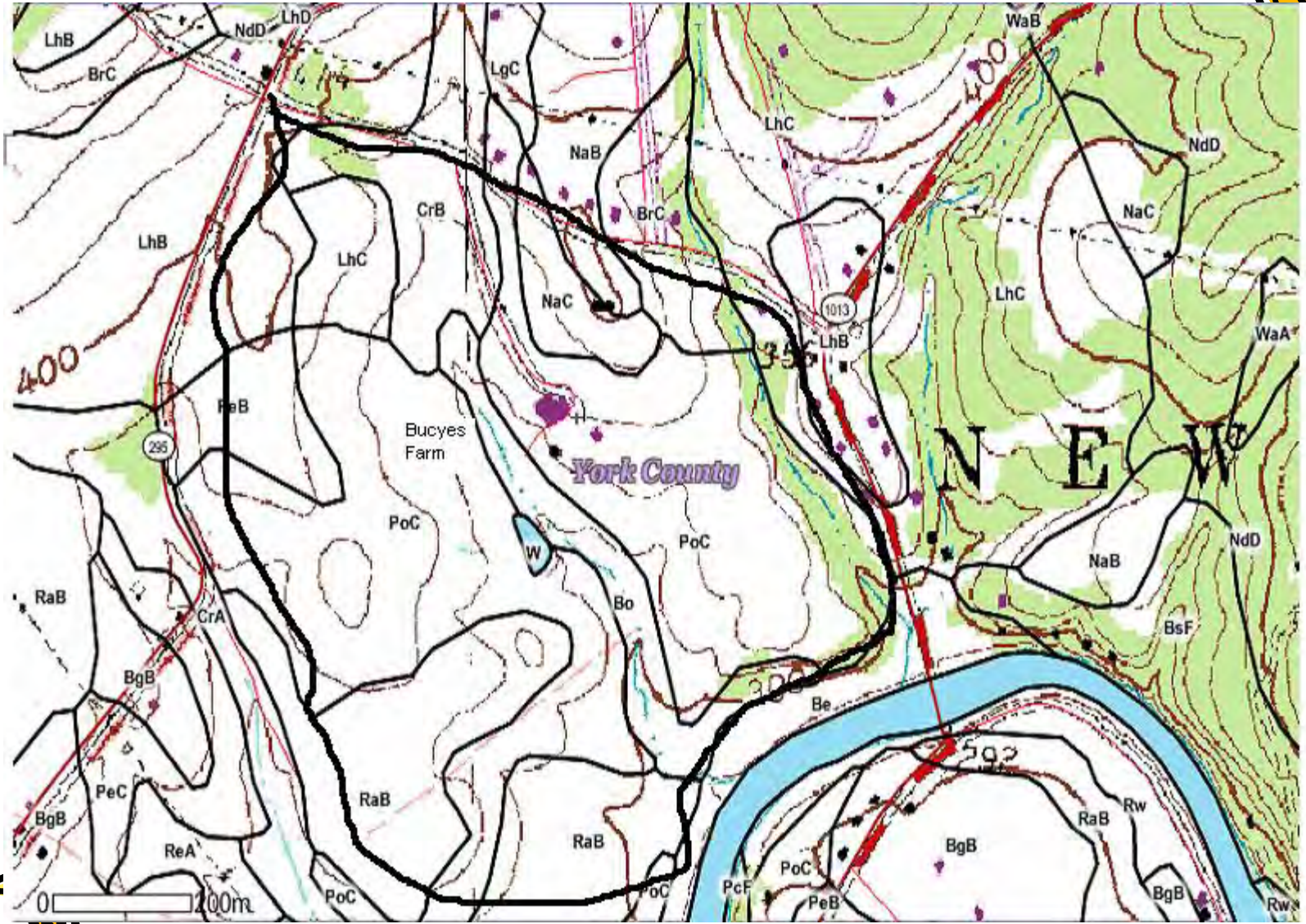
Latitude: Deg: Min: Sec: Longitude: Deg: Min: Sec: Make Map

Done Internet 100%









- Geology
 - Landmarks
 - NWI Wetlands
 - Railroads
 - Rivers & Streams
 - Roads
 - Shaded Relief
 - Soils
 - Special Features
 - Streams 305b
 - Topo Maps
 - Townships
 - Water Bodies
 - Watersheds
- Active Layer...



The information on SoilMap is provided "as is" and the User assumes the entire risk as to its quality and performance. Soil maps are subject to change and may be copied without permission. Enlarging the maps may result in misunderstanding of map details. Help in using soil surveys is available from the [local office of the NRCS](#).





Grandview Dr

HEL

stream boarder

35' grass buffers

field 2

field 1

field 3

contour strips

Farm house, 2 silos, 3 outbuildings

field 4

pond

forest stream buffer

HEL

field 5

Cragmoor Rd

295

Grandview Dr

State Route 1013

Cragmoor Rd

295

CN RD

Digital-Topo-Maps.com - Topographic Maps

Home	Terrain Navigator Topo Software	MapPass Online Topos	National Geographic Topo State	DeLorme Topo North America	Delorme Atlas	Raven Wall Maps	Check Out USA Shipping Only
----------------------	---	--------------------------------------	--	--	-------------------------------	---------------------------------	--

Share | [f](#) [t](#) [su](#) [my](#)

Instructions: 1) Zoom in to your location; 2) click the "MyTopo" button for topo maps

Get More Detail and Features With
[Map Pass](#)
 Only \$29.95/yr

Large Format Prints
 Topos & Aerials

Digital-Topo-Maps.com - Topographic Maps

Home	Terrain Navigator Topo Software	MapPass Online Topos	National Geographic Topo State	DeLorme Topo North America	Delorme Atlas	Raven Wall Maps	Check Out USA Shipping Only
----------------------	---	--------------------------------------	--	--	-------------------------------	---------------------------------	--

Instructions: 1) Zoom in to your location; 2) click the "MyTopo" button for topo maps

Share | [f](#) [t](#) [su](#) [my](#) [g+](#) [e](#)



Map MyTopo Hybrid

Get More Detail and Features With
Map Pass
Only \$29.95/yr

Large Format Prints
Topos & Aerials

Instructions: 1) Zoom in to your location; 2) click the "MyTopo" button for topo maps



Get M... and Fe...
Ma...
Only \$...
Large F...
Topos...

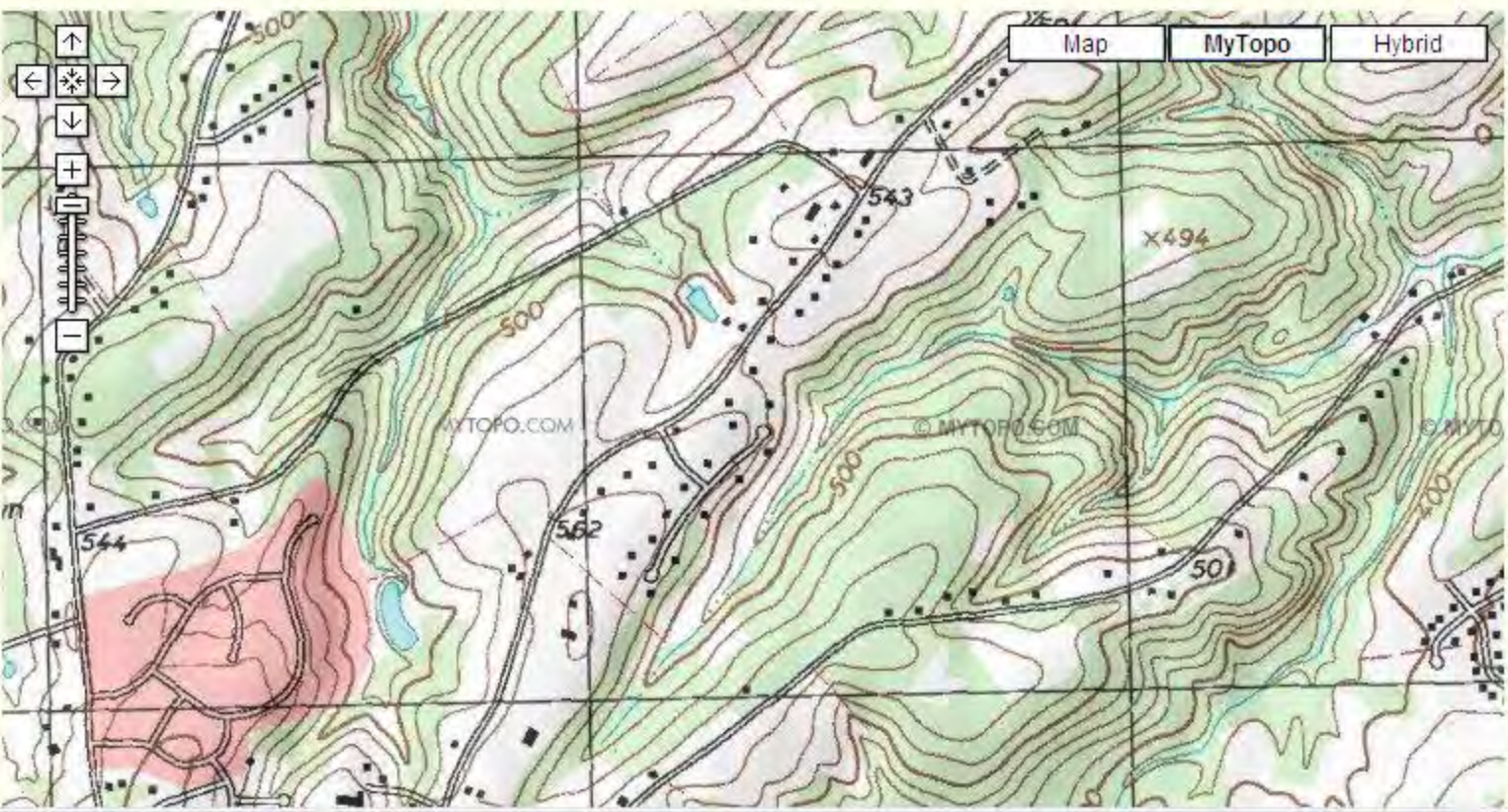


Digital-Topo-Maps.com - Topographic Maps

Home	Terrain Navigator Topo Software	MapPass Online Topos	National Geographic Topo State	DeLorme Topo North America	Delorme Atlas	Raven Wall Maps	Check Out USA Shipping Only
------	---------------------------------	----------------------	--------------------------------	----------------------------	---------------	-----------------	--

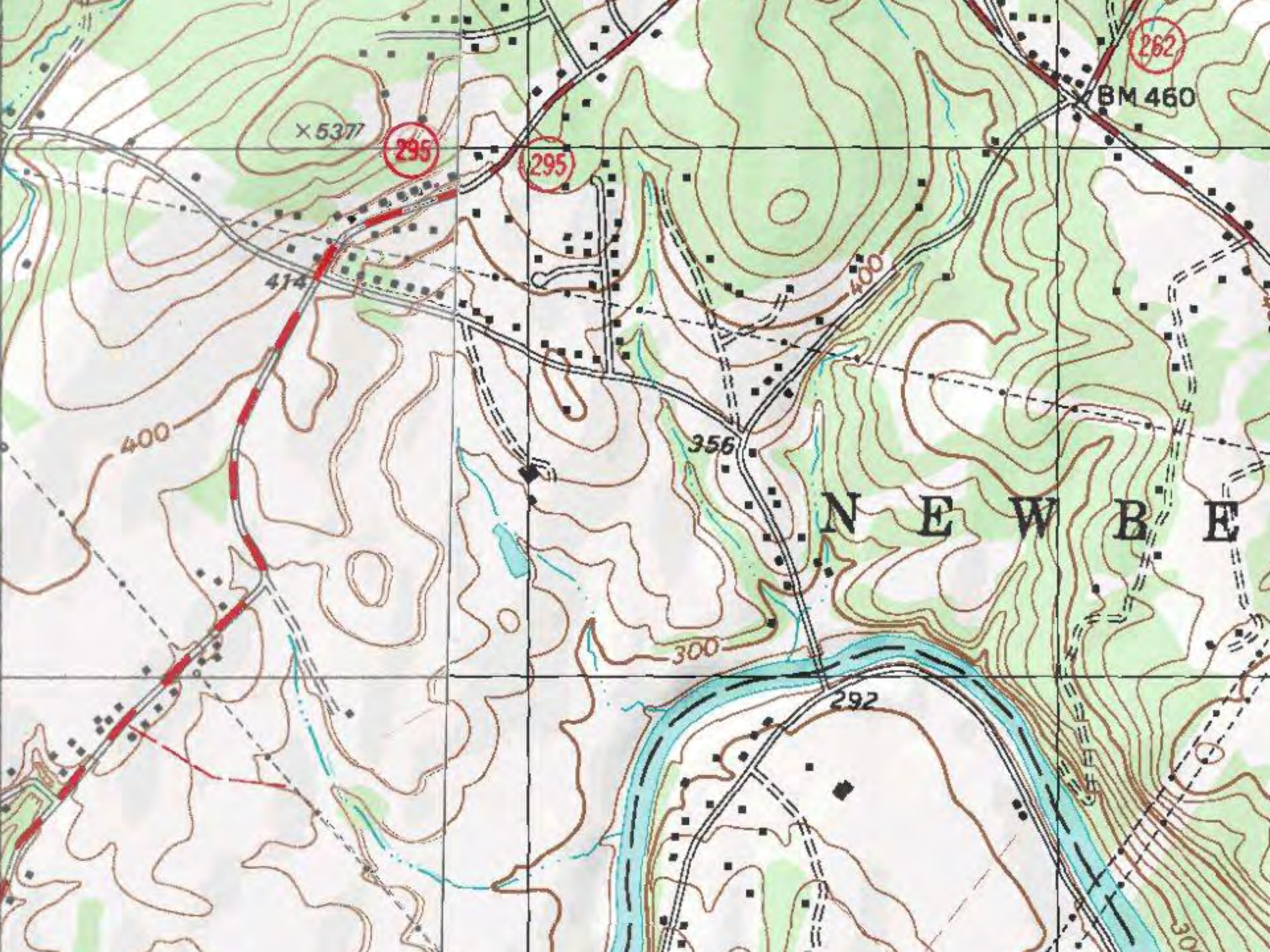
Instructions: 1) Zoom in to your location; 2) click the "MyTopo" button for topo maps

Share | [f](#) [t](#) [su](#) [my](#) [g+](#) [p](#) [e](#) [r](#) [t](#) [i](#) [o](#) [n](#) [l](#) [y](#) [a](#) [c](#) [c](#) [e](#) [s](#) [s](#)



Get More Detail and Features With
Map Pass
Only \$29.95/yr

Large Format Prints
Topos & Aerials



262

BM 460

295

295

x 5377

414

400

400

356

NEWBE

300

292

300

