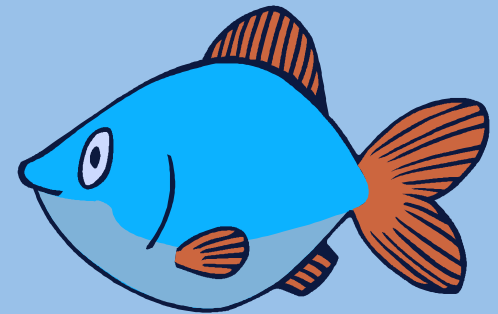


General Ag. Compliance & Chesapeake Bay Update

PA Clean Streams Law & General AG Compliance

- Prevent discharge of pollutants & water quality impairment

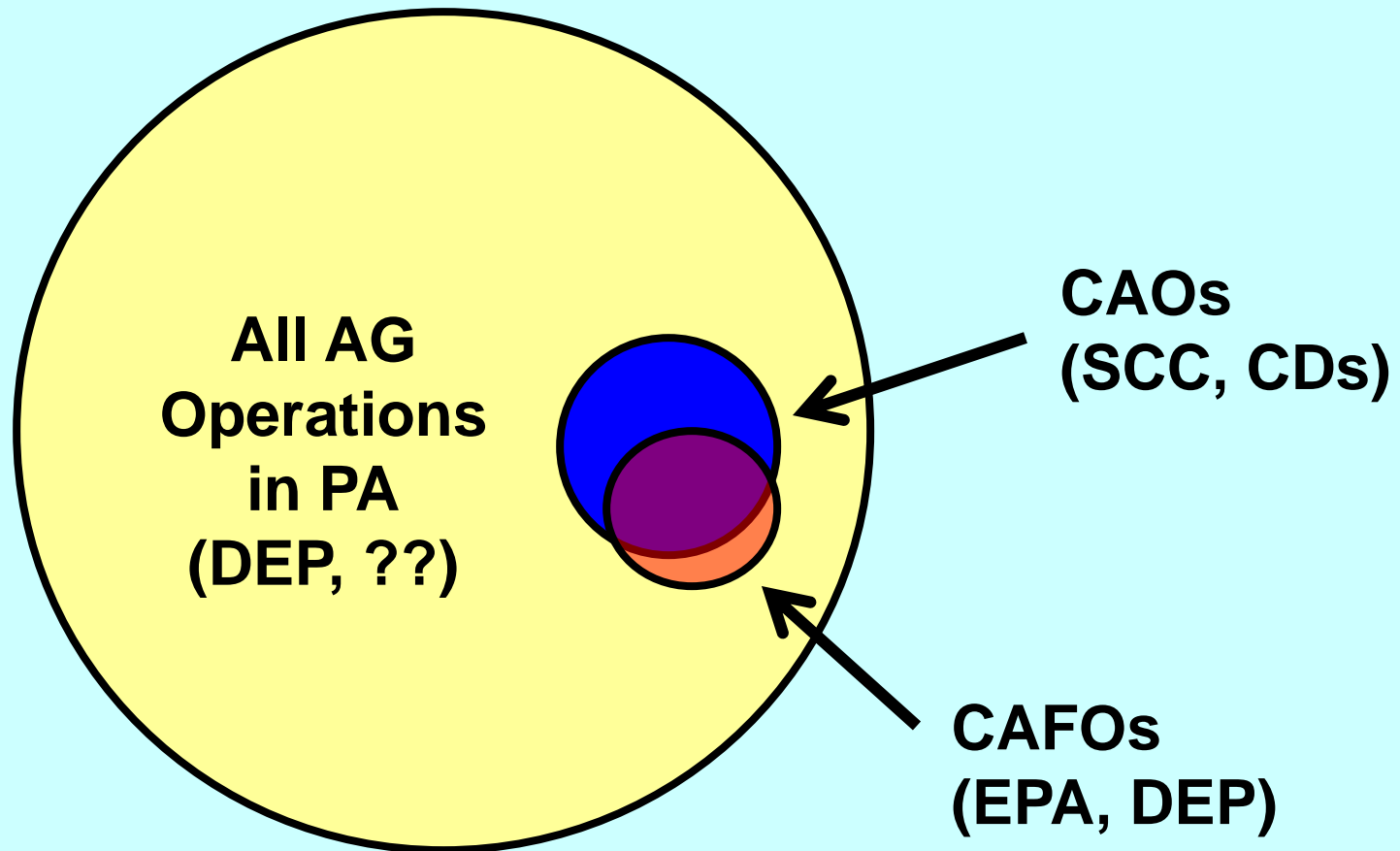


Compliance vs. Enforcement

- Compliance Baseline = Posted Speed Limit
- Enforcement = Issuing Tickets



3 Tiers of AG & Water Quality Regulations in PA (Title 25)



Typical AG Operation (non-CAO, non-CAFO)

- Manure Storage
- Land Application of Manure
- Erosion and Sedimentation Control
 - Plowing, Tillage & Earth Disturbance

Manure Storage

- For liquid/semi-solid manure storage
 - PE certification (design & const. inspection)
 - Adequate Freeboard (handle major storms)
- Some will need special DEP permits
 - Location w/in certain watersheds or size
 - Check with Conservation District

Land Application of Manure

- Written & Implement a simplified “Manure” Management Plan
 - Does not need formal Act 38 approval
- Application rates for Nitrogen and Phosphorus based on crop needs
 - Crop Fields and Pastures
- Records (production & use)

Erosion & Sedimentation Control

- Follow a conservation plan
 - Conservation Plan written to “T”
 - NRCS plan will work
 - BMPs to protect water quality an option
 - An “Agricultural E & S” plan, if followed, is acceptable

DEP's "Thinking"

- Written plans and records generally not reviewed or approved
- Regular inspections not conducted
- PA Clean Streams Law still requires compliance with baseline

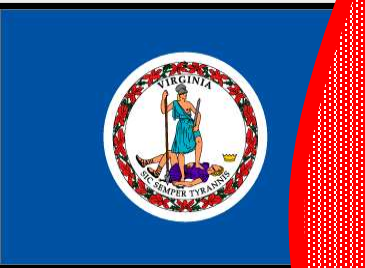
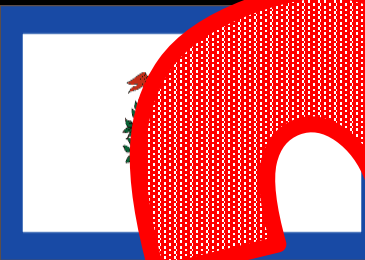
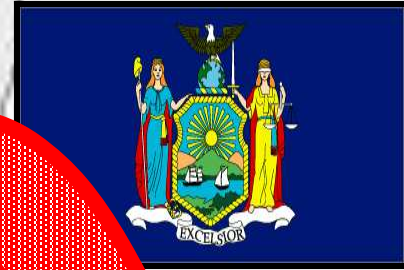
DEP's "Visual Signs" of Problems

- Runoff or infiltration of pollutants
- Uncontrolled stormwater through animal concentration areas
- Inadequate manure storage
- Excess manure application
- Cropland erosion (gullies, sediment in stream)

Snyder County, PA

within the Chesapeake Bay Watershed





2010



Susquehanna River is Cleaner

Nutrient & Sediment Concentrations are Trending Downward

Flow-adjusted Nitrogen Concentration Trends in the Chesapeake Bay Watershed

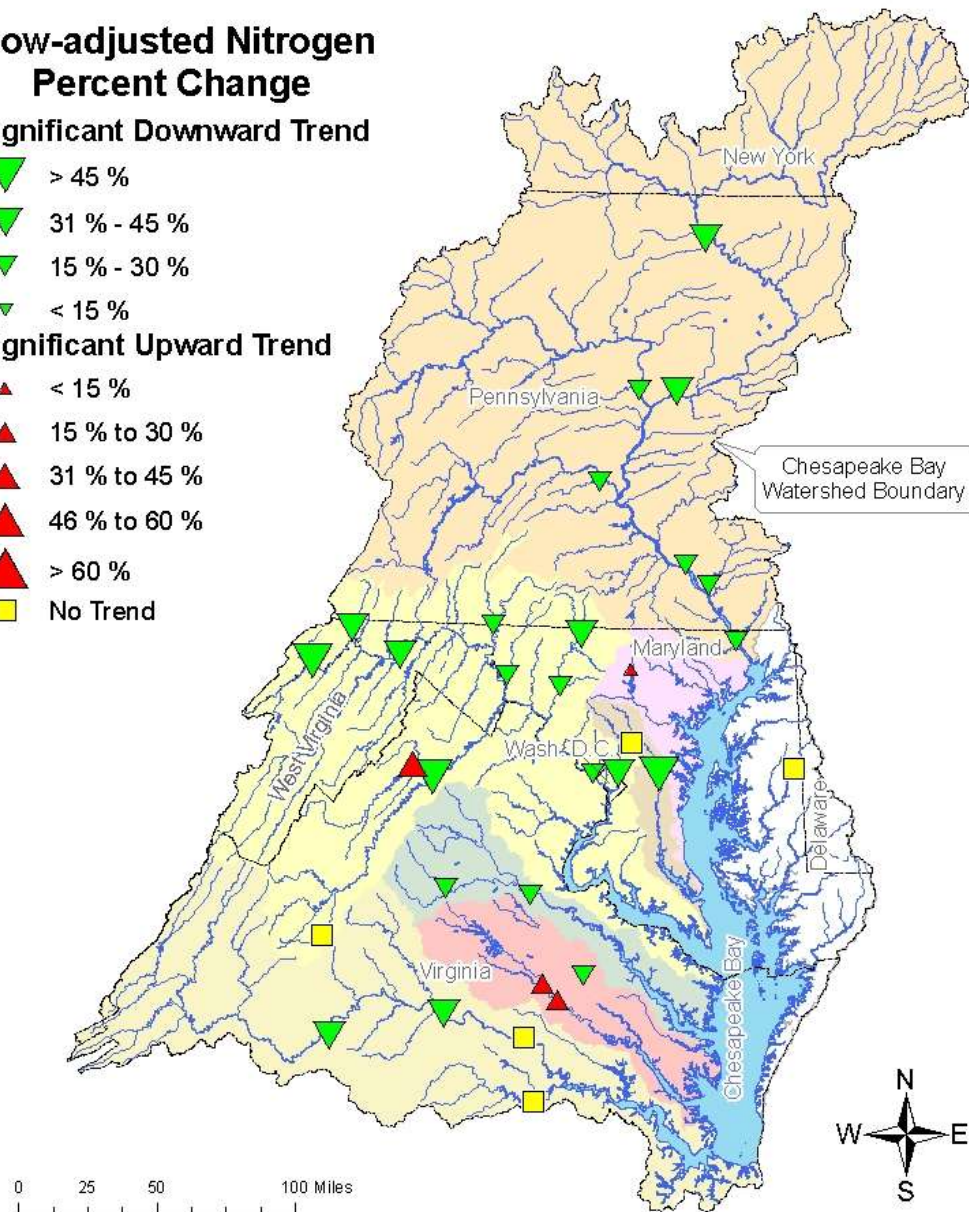
Flow-adjusted Nitrogen Percent Change

Significant Downward Trend

- ▼ > 45 %
- ▼ 31 % - 45 %
- ▼ 15 % - 30 %
- ▼ < 15 %

Significant Upward Trend

- ▲ < 15 %
- ▲ 15 % to 30 %
- ▲ 31 % to 45 %
- ▲ 46 % to 60 %
- ▲ > 60 %
- No Trend



Yet, Much to Do

- Will PA & Chesapeake Bay Watershed meet 2010 Deadline?
- What funding will be available for BMPs?
- What non-funding options available?

Questions:

Barry Spangler

Ag. Conservation Technician

Snyder County Conservation District

570-837-0007, x5