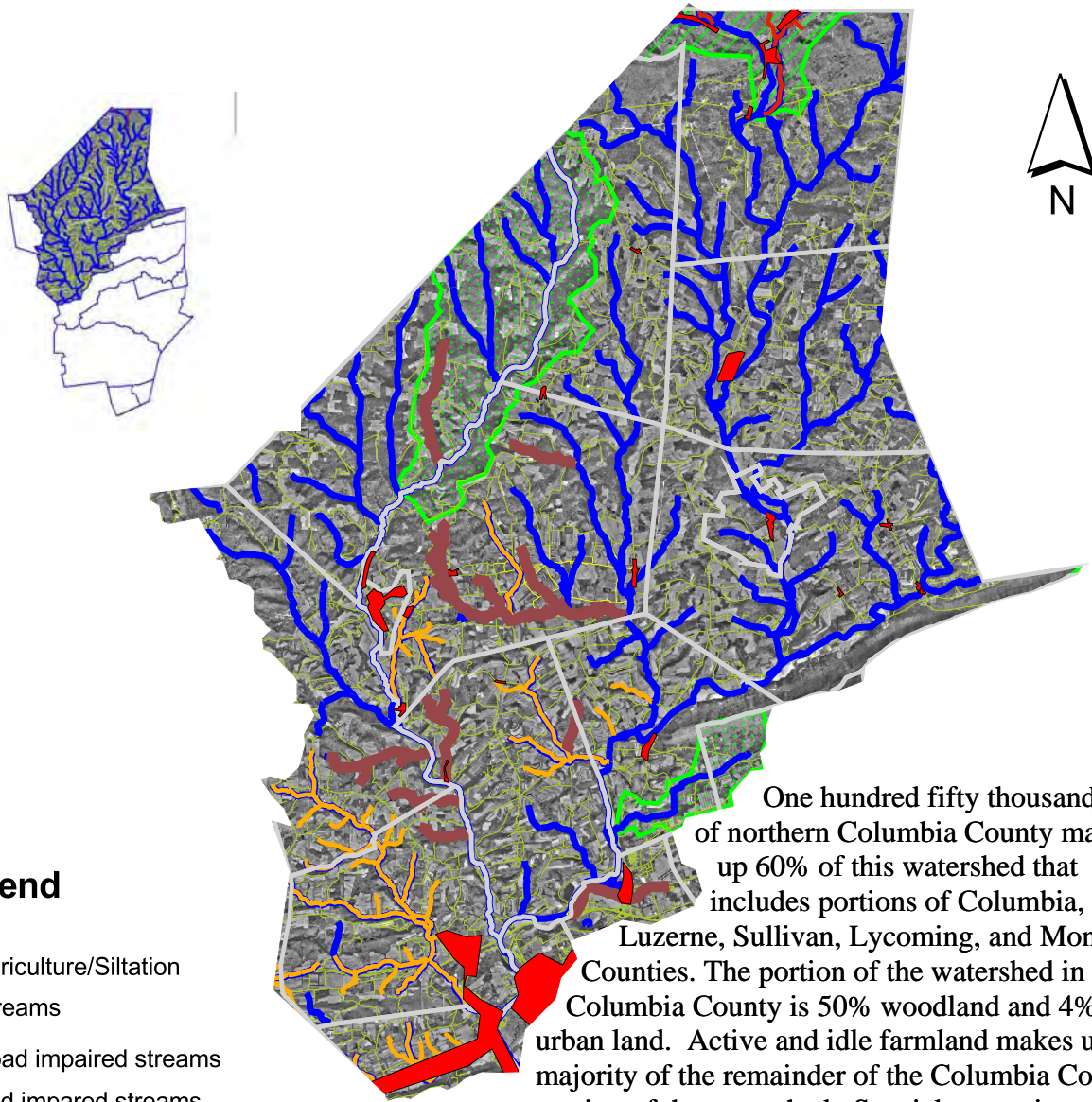


FISHING CREEK WATERSHED

Date: 02/03/2005



Legend

-  Agriculture/Siltation
-  Streams
-  Road impaired streams
-  Acid impaired streams
-  Roads
-  EV Watershed
-  HQ Watershed
-  Municipalities
-  Urban/Residential Areas

One hundred fifty thousand acres of northern Columbia County makes up 60% of this watershed that includes portions of Columbia, Luzerne, Sullivan, Lycoming, and Montour Counties. The portion of the watershed in Columbia County is 50% woodland and 4% urban land. Active and idle farmland makes up the majority of the remainder of the Columbia County portion of the watershed. Special protection waters in the headwaters of the basin are being degraded as a result of acid precipitation. Within this watershed, 6 miles of streams have been impaired due to acid deposition qualifying it for the 303(d) list. Agriculture problems results in 70 miles of streams on the 303(d) list and siltation from roads results in an additional 30 miles of streams being listed.

