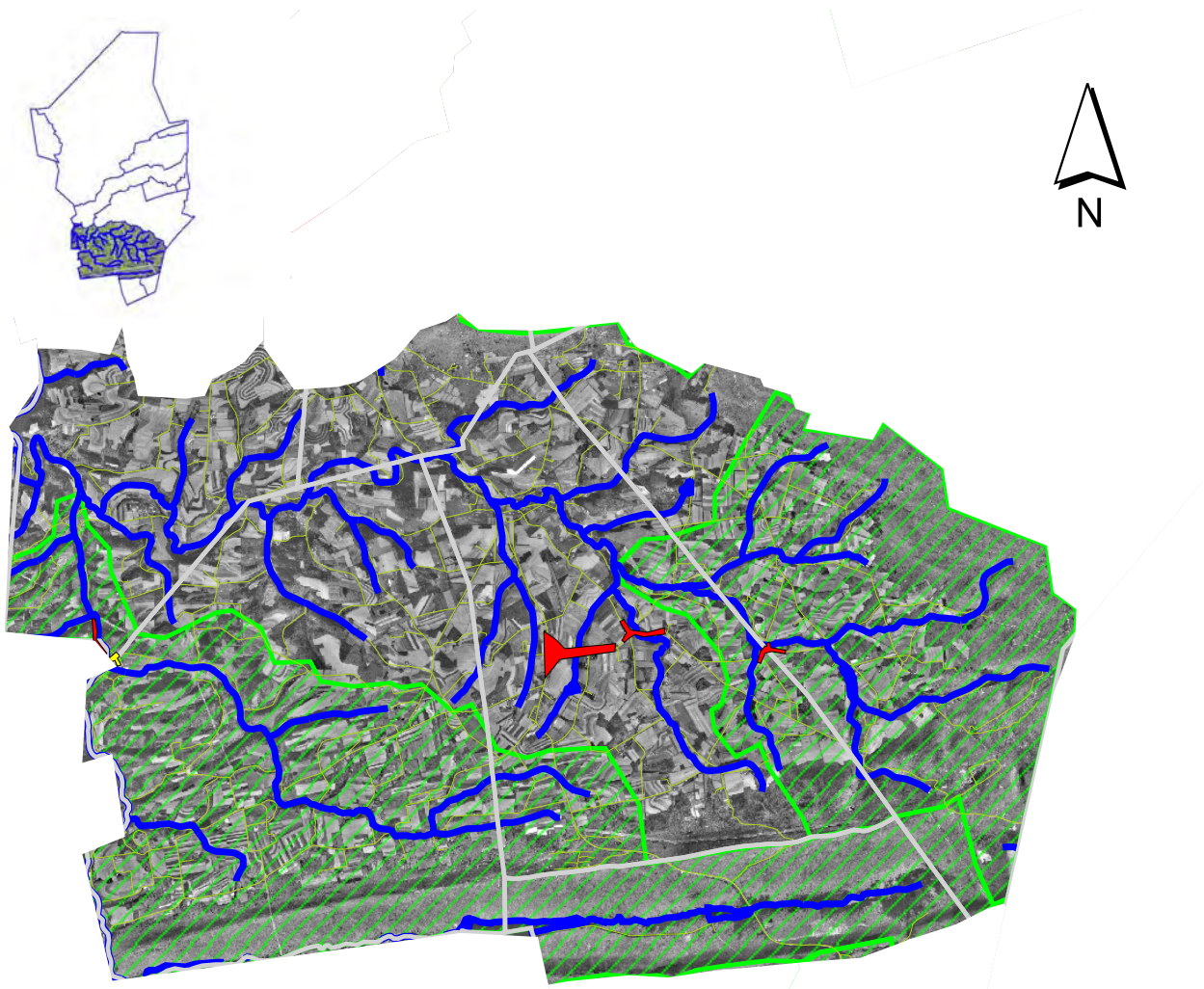







ROARING CREEK WATERSHED

Date: 02/03/2005



Legend

-  Streams
-  Roads
-  HQ Watershed
-  Municipalities
-  Urban/Residential Areas

This 51,000 acre watershed located in the southwest corner of the county is nearly 40% forestland. Over half (29,000 acres) of the watershed has been identified as special protection watersheds. While much of this area is forestland, there are several areas of intensive agriculture included in this watershed. Outdoor recreational is a major land use and has the potential to have an impact on the water quality. Source water protection is also a concern for this watershed. The DCNR Bureau of Forestry is a major landowner in this watershed and will be an effective partner.

