

Telling Pennsylvania's Local Story

Emily Trentacoste
EPA Chesapeake Bay Program Office

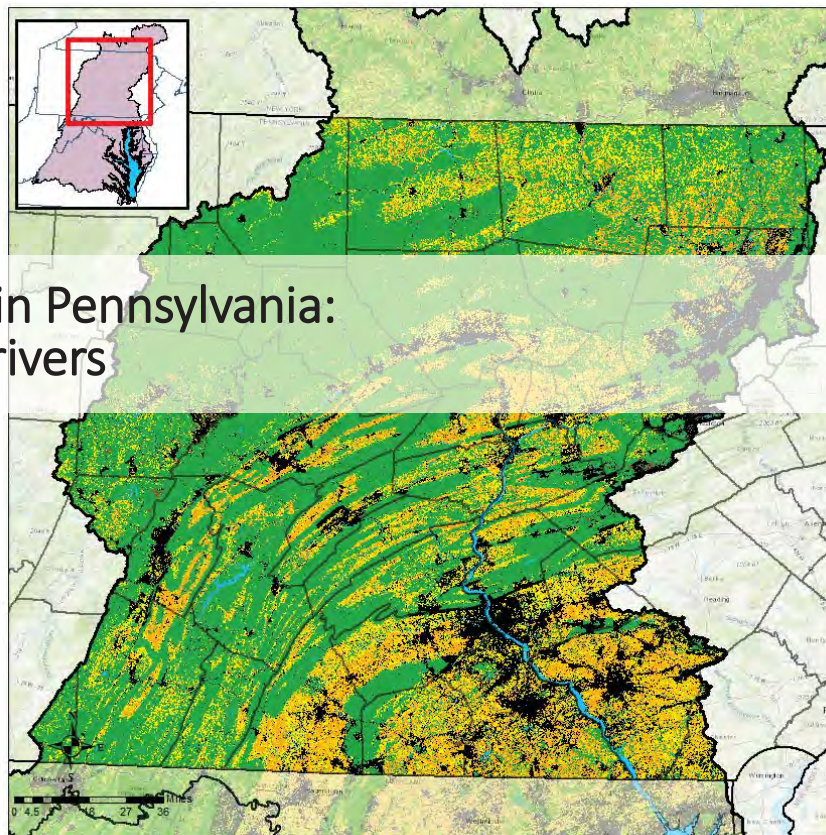
Matt Johnston
University of Maryland
Chesapeake Bay Program Office

Pennsylvania Conservation Districts All-Bay Meeting
3/12/2018

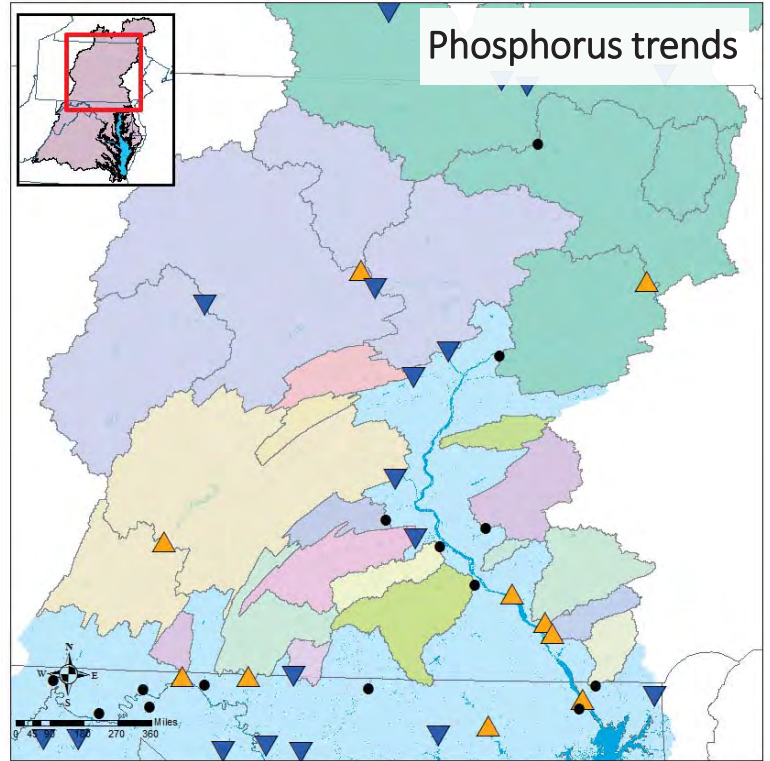
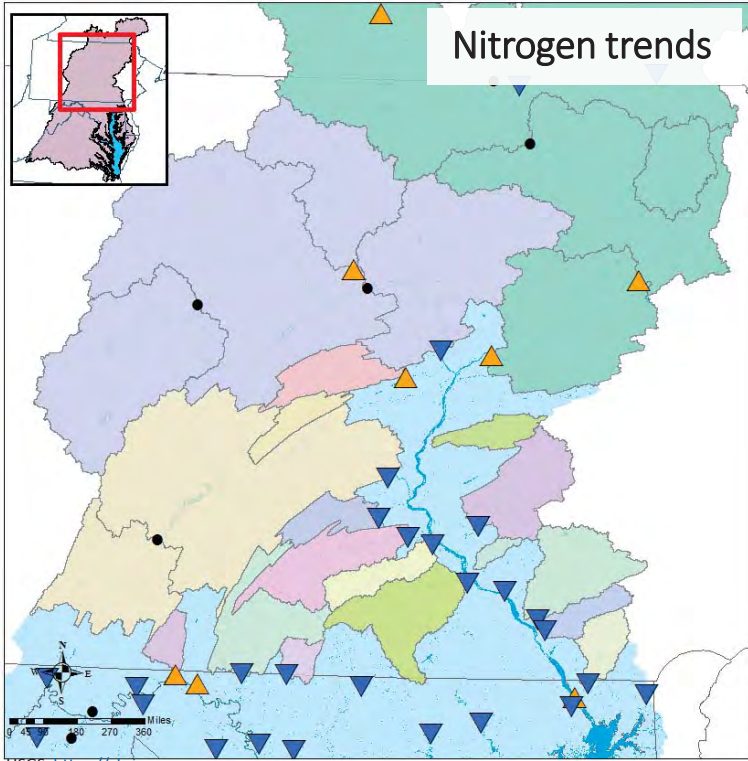
The opinions expressed in this technical presentation are those of the author and do not necessarily reflect the views of US EPA.

* References & descriptions of data analyses are described at the end of these slides.

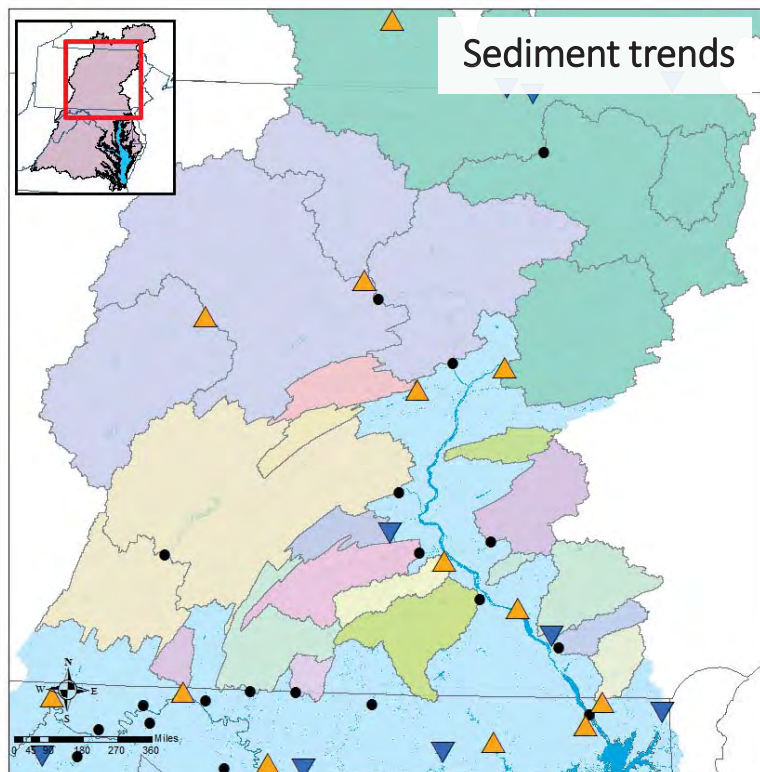
Water quality in Pennsylvania: sources and drivers



Water quality trends vary geographically and patterns are changing



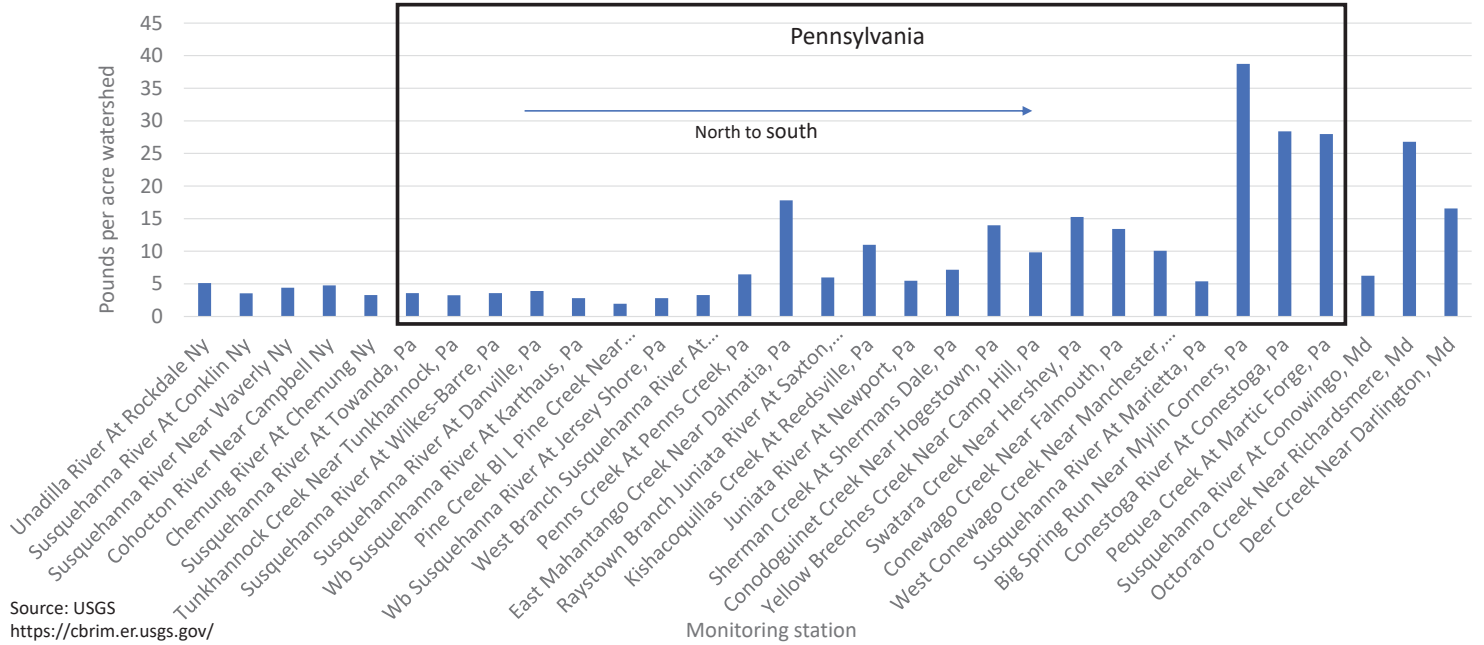
Water quality trends vary geographically and patterns are changing



Water quality trends vary geographically and patterns are changing

Monitoring shows that some Pennsylvania watersheds, especially in the Lower Susquehanna, generate some of the highest amounts of nitrogen, phosphorus and sediment in the Chesapeake Bay watershed.

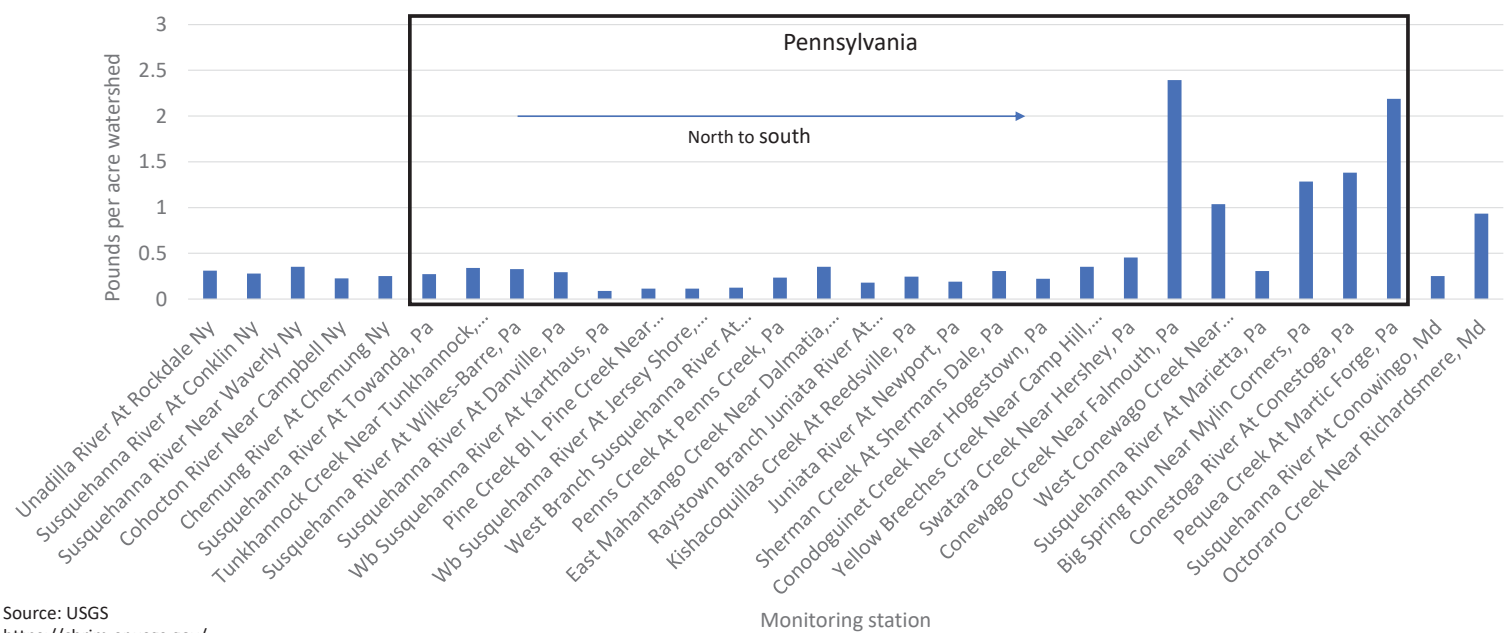
Total Nitrogen Pounds per Acre – Susquehanna River



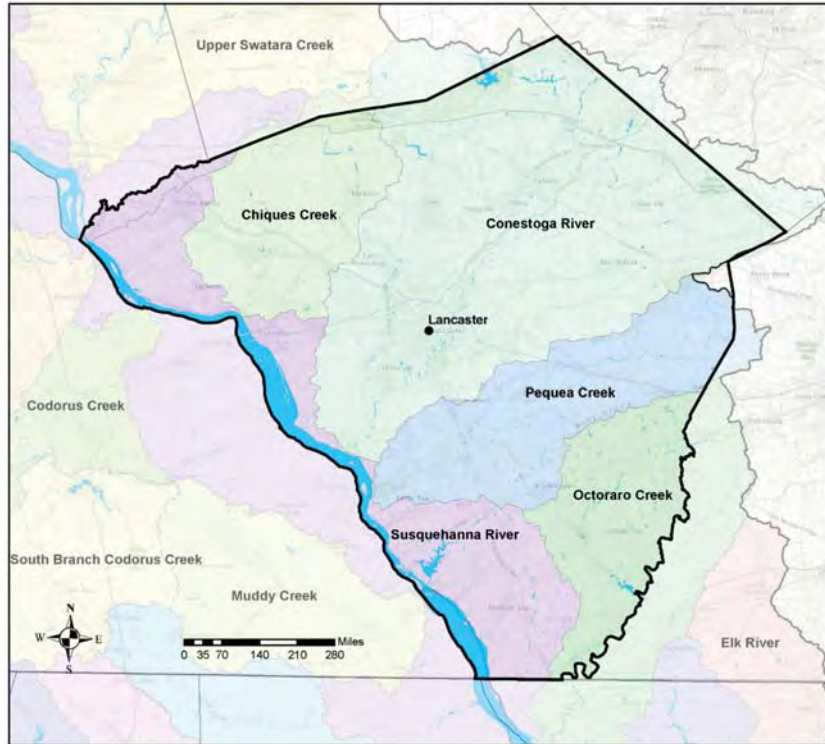
Water quality trends vary geographically and patterns are changing

Monitoring shows that some Pennsylvania watersheds, especially in the Lower Susquehanna, generate some of the highest amounts of nitrogen, phosphorus and sediment in the Chesapeake Bay watershed.

Total Phosphorus Pounds per Acre – Susquehanna River

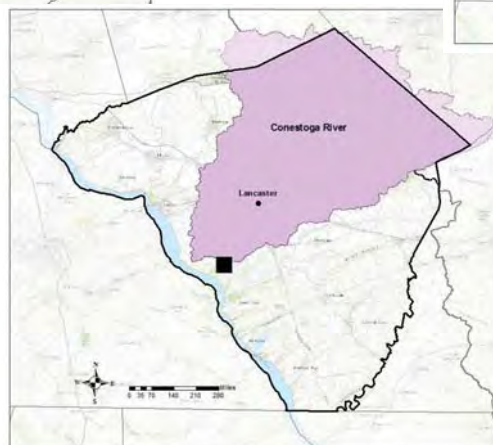
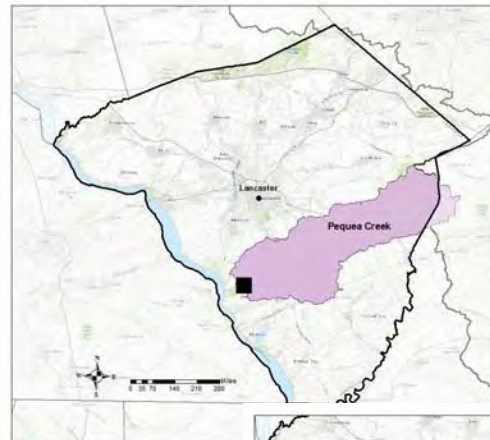


Water quality trends vary geographically and patterns are changing

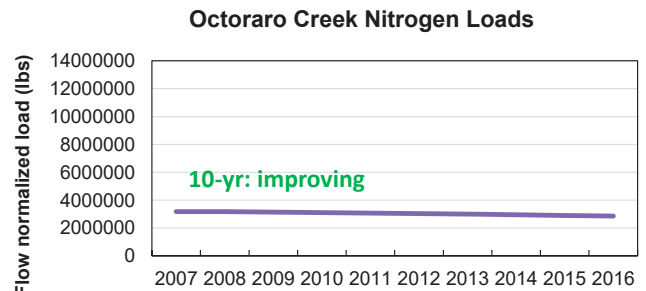
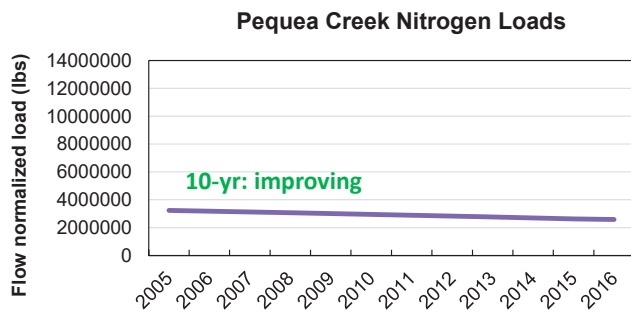
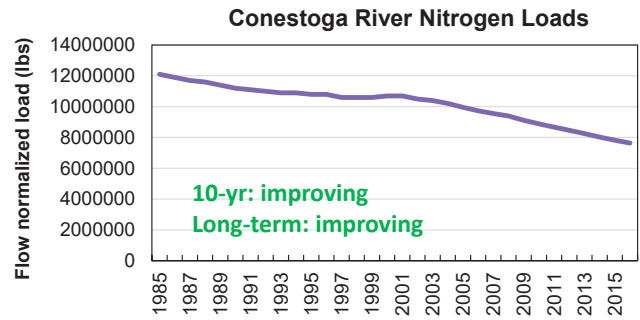
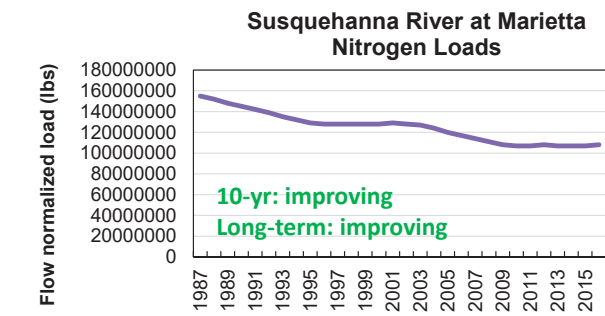


USGS. <https://cbrim.er.usgs.gov>

Example: Water quality in Lancaster County watersheds



Example: Water quality in Lancaster County watersheds: nitrogen



Example: Water quality in Lancaster County watersheds: phosphorus

