

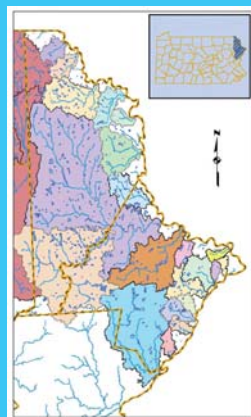
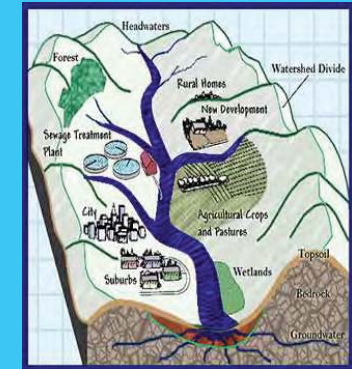
WATERSHEDS

Jamie A. Roche
Watershed Specialist
Wayne Conservation District
(570) 253-0930
jroche@co.wayne.pa.us

What is a watershed?

A watershed is a geographic area of land across which water, and the sediments and dissolved materials it contains, flow on their way to a single common outlet – a stream, lake or river.

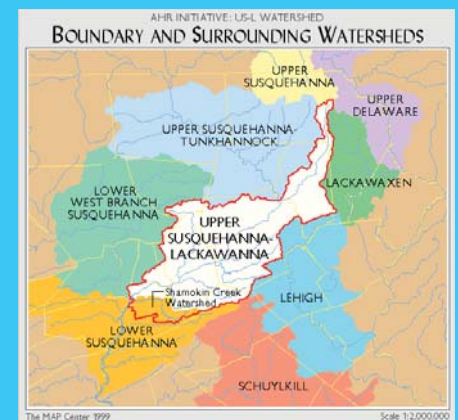
A watershed can be compared to a huge basin collecting all of the precipitation that falls within it and carrying this to the common outlet.



All of Pike County and most of Wayne County lies within the Delaware River Watershed.

Smaller tributary drainages (sub-watersheds) make up the major watersheds in Pike & Wayne Counties.

A sub-watershed is a smaller basin within a larger drainage area where all of the surface water drains to a central point of the larger watershed.



Lackawaxen River Watershed

includes parts of 4 counties and 29 municipalities

Wayne County <small>(20)</small>		Pike County	Lackawanna County
Berlin Twp Bethany Boro Canaan Twp Cherry Ridge Twp Clinton Twp Damascus Twp Dyberry Twp Hawley Boro Honesdale Boro Lake Twp	Lebanon Twp Mt. Pleasant Twp Oregon Twp Palmyra Twp Paupack Twp Preston Twp Prompton Twp South Canaan Twp Texas Twp Waymart Boro	Blooming Grove Twp Lackawaxen Twp Palmyra Twp Greene Twp	Carbondale Twp Jefferson Twp Madison Township Monroe County Barrett Township Coolbaugh Twp

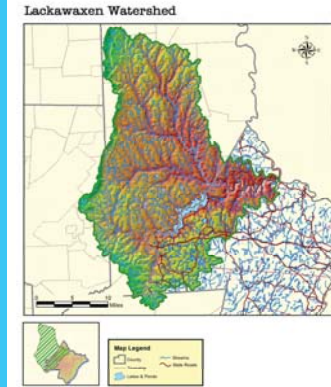
Lackawaxen River Watershed

598 square miles

248 Major lakes, 610 miles of streams are included in the Lackawaxen River Watershed

Major Tributaries within the watershed which are all classified by Pennsylvania Water Quality Standards as **"high quality"** include:

Big Brook, Carley Brook, Dyberry Creek (including east and west branches), Holbert Creek, Johnson Creek, Middle Creek, Van Auken Creek, Wangum Creek, West Branch, Wallenpaupack Creek, Blooming Grove Creek, WestFall Creek



Wayne and Pike Counties are located within the Delaware River Basin.

The Delaware River is the longest un-dammed river east of the Mississippi River, extending **330 miles** from the Catskill Mountains of New York State to the mouth of the Delaware Bay where it meets the Atlantic Ocean.

The River is fed by **216** tributaries, the largest being the Schuylkill & Lehigh Rivers in Pennsylvania.



Information taken from testimony submitted by DWRB: Executive Director Carol R. Collier to the U.S. House of Representatives Committee on Financial Services on August 15, 2006.

In all, the Delaware Basin contains **13,539 square miles** (including the 782 square-mile Delaware Bay) draining parts of Pennsylvania (**6,422 square miles** or **50.3%** of the basin's total land area).

The Delaware River Basin also includes **42 Counties** and **838 Municipalities**.

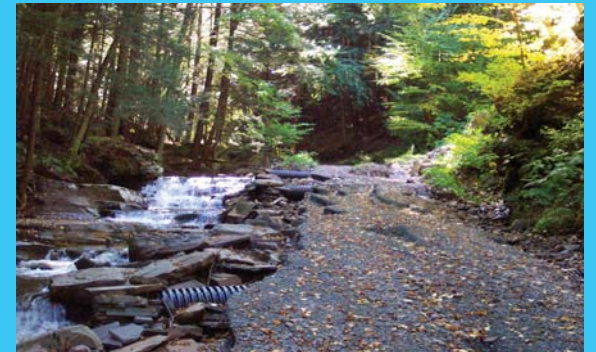


Information taken from testimony submitted by DWRB: Executive Director Carol R. Collier to the U.S. House of Representatives Committee on Financial Services on August 15, 2006.

So...what happens when there is a flood?



General Edgar Jadwin Dam – Located in Honesdale, PA; Wayne County
Flood of June 2006





So...what does this have to do with rain barrels?

Rain Barrels can be viewed as a tool used to divert water from storm drain systems, in turn reducing pollutants and the velocity of the water entering our local streams and rivers.

Although rain barrels can only hold a small amount of water, generally around 50 – 55 gallons, you can use it in addition to other water management practices at your home to achieve even more reduction in runoff.

For more information, contact your at your County Conservation District:

Pike County Conservation District

556 Route 402, Suite 1
Hawley, PA 18428
(570) 226-8220
pikecd@pikepa.org

Wayne Conservation District

648 Park Street
Honesdale, PA 18431
(570) 253-0930
waynecd@co.wayne.pa.us